



## Submittal Data Sheet

4.5-Ton DC Ducted Concealed Ceiling

FXMQ54PBVJU

### FEATURES

- Increased capacity range for increased flexibility
- Improved efficiency with DC fan motor
- Ease of installation with auto adjusting airflow at commissioning based on external static pressure
- Easy maintenance with service access from below
- Installation flexibility with a low profile, compact design at less than 12" in height
- Standard Limited Warranty: 10-year warranty on compressor and all parts

### BENEFITS

- Design allows it to be completely concealed - perfect for retail, classrooms, offices, banks, restaurants, and hotels.
- Enhanced indoor air quality and LEED ready with MERV 13 filter options
- Flexible ductwork design with ESP capabilities up to 0.8" W.G.
- New economizer control logic
- New configurable auxiliary heater control logic



LSM - Yanmar Distributor

Direct (250) 878-1666  
Office (800) 663-1753

[www.lsm-cogeneration.com](http://www.lsm-cogeneration.com)



## Submittal Data Sheet

4.5-Ton DC Ducted Concealed Ceiling

FXMQ54PBVJU

### PERFORMANCE

Indoor Unit Model No.	FXMQ54PBVJU	Indoor Unit Name:	4.5-Ton DC Ducted Concealed Ceiling
Type:	Ducted	Rated Cooling Conditions:	Indoor (°F DB/WB): 80 / 67 Ambient (°F DB/WB): 95 / 75
Rated Cooling Capacity (Btu/hr):	54,000	Rated Heating Conditions:	Indoor (°F DB/WB): 70 / 70 Ambient (°F DB/WB): 47 / 43
Sensible Capacity (Btu/hr):	40,300	Rated Piping Length(ft):	
Cooling Input Power (kW):	0.460	Rated Height Separation (ft):	
Rated Heating Capacity (Btu/hr):	60,000		
Heating Input Power (kW):	0.45		

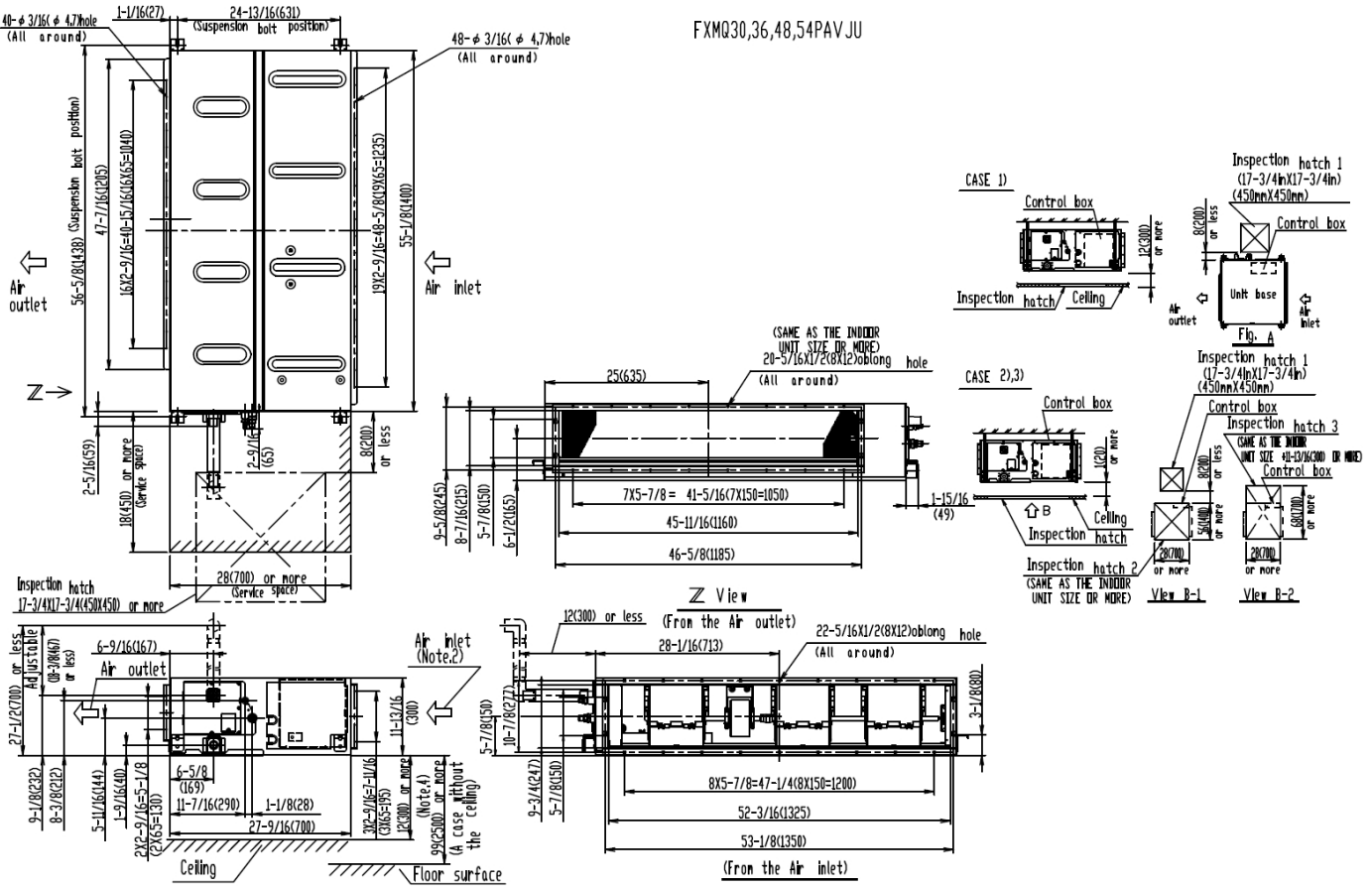
### INDOOR UNIT DETAILS

Power Supply (V/Hz/Ph):	208-230 / 60 / 1	Airflow Rate (HH/H/M/L) (CFM):	1,624/1,624/1,377/1,130
Power Supply Connections:	L1, L2, Ground	Moisture Removal (Gal/hr):	
Min. Circuit Amps MCA (A):	3.40	Gas Pipe Connection (inch):	5/8
Max Overcurrent Protection (MOP) (A):	15.00	Liquid Pipe Connection (inch):	3/8
Dimensions (HxWxD) (in):	11-13/16 x 55-1/8 x 27-9/16	Condensate Connection (inch):	1-1/4
Panel (HxWxD) (in):		Sound Pressure (H/M/L) (dBA):	46/45/43
Net Weight (lb):	104	Sound Power Level (dBA):	
Panel Weight (lb):		Ext. Static Pressure (Rated/Max) (inWg):	0.40 / 0.56

**Submittal Data Sheet**  
**4.5-Ton DC Ducted Concealed Ceiling**  
**FXMQ54PBVJU**

**DIMENSIONAL DRAWING**

FXMQ30,36,48,54PAVJU



LSM - Yanmar Distributor

Direct (250) 878-1666  
 Office (800) 663-1753

[www.lsm-cogeneration.com](http://www.lsm-cogeneration.com)