



## Submittal Data Sheet

3.0-Ton DC Ducted Concealed Ceiling

FXMQ36PBVJU

### FEATURES

- Increased capacity range for increased flexibility
- Improved efficiency with DC fan motor
- Ease of installation with auto adjusting airflow at commissioning based on external static pressure
- Easy maintenance with service access from below
- Installation flexibility with a low profile, compact design at less than 12" in height
- Standard Limited Warranty: 10-year warranty on compressor and all parts

### BENEFITS

- Enhanced indoor air quality and LEED ready with MERV 13 filter options
- Flexible ductwork design with ESP capabilities up to 0.54" W.G.
- New economizer control logic
- New configurable auxiliary heater control logic
- Design allows it to be completely concealed - perfect for retail, classrooms, offices, banks, restaurants, and hotels.



LSM - Yanmar Distributor

Direct (250) 878-1666  
Office (800) 663-1753

[www.lsm-cogeneration.com](http://www.lsm-cogeneration.com)



## Submittal Data Sheet

3.0-Ton DC Ducted Concealed Ceiling

FXMQ36PBVJU

### PERFORMANCE

Indoor Unit Model No.	FXMQ36PBVJU	Indoor Unit Name:	3.0-Ton DC Ducted Concealed Ceiling
Type:	Ducted	Rated Cooling Conditions:	Indoor (°F DB/WB): 80 / 67 Ambient (°F DB/WB): 95 / 75
Rated Cooling Capacity (Btu/hr):	36,000	Rated Heating Conditions:	Indoor (°F DB/WB): 70 / 70 Ambient (°F DB/WB): 47 / 43
Sensible Capacity (Btu/hr):	28,800	Rated Piping Length(ft):	
Cooling Input Power (kW):	0.380	Rated Height Separation (ft):	
Rated Heating Capacity (Btu/hr):	40,000		
Heating Input Power (kW):	0.36		

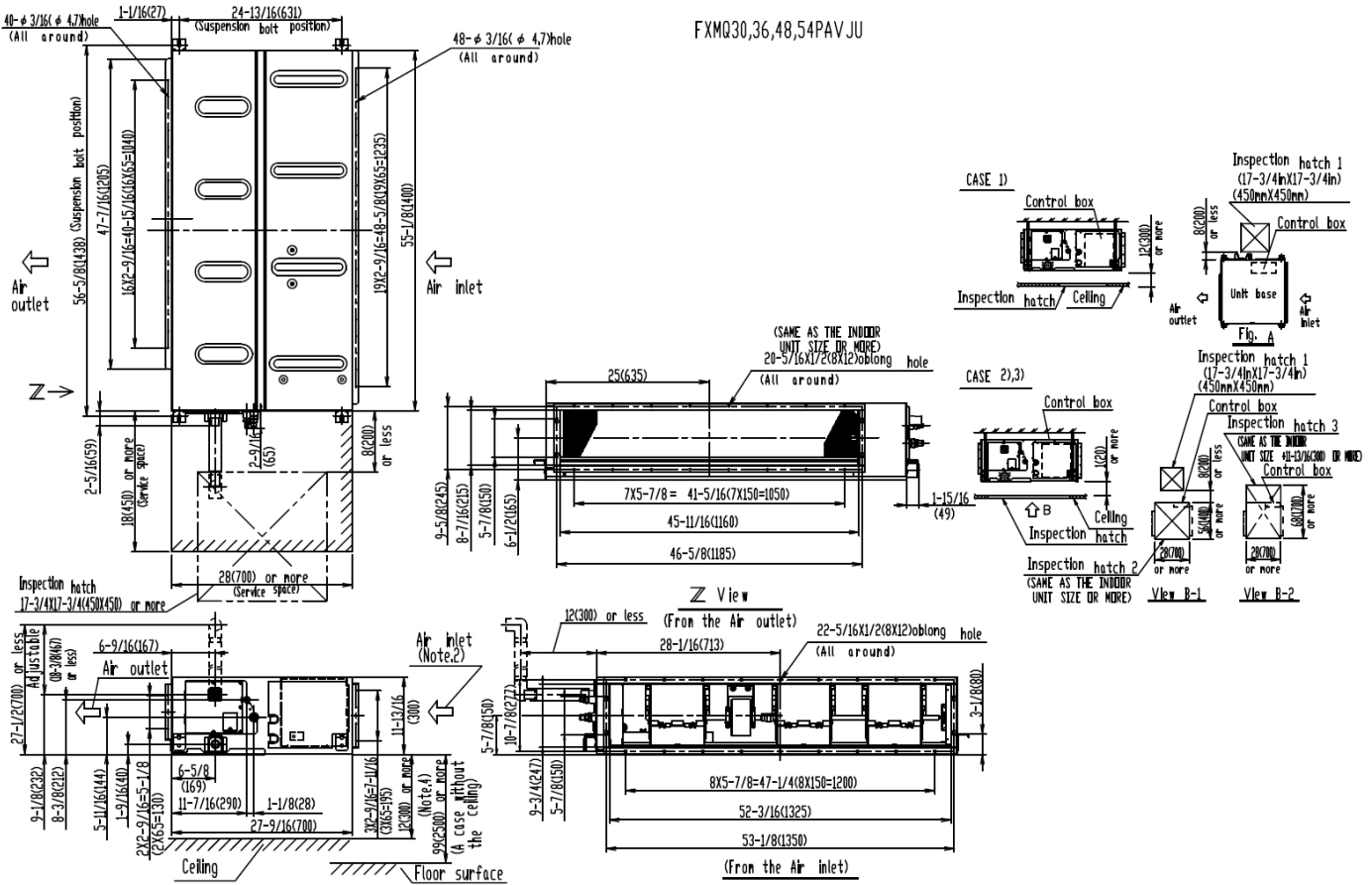
### INDOOR UNIT DETAILS

Power Supply (V/Hz/Ph):	208-230 / 60 / 1	Airflow Rate (HH/H/M/L) (CFM):	1,130/1,130/953/812
Power Supply Connections:	L1, L2, Ground	Moisture Removal (Gal/hr):	
Min. Circuit Amps MCA (A):	2.90	Gas Pipe Connection (inch):	5/8
Max Overcurrent Protection (MOP) (A):	15.00	Liquid Pipe Connection (inch):	3/8
Dimensions (HxWxD) (in):	11-13/16 x 55-1/8 x 27-9/16	Condensate Connection (inch):	1-1/4
Panel (HxWxD) (in):		Sound Pressure (H/M/L) (dBA):	43/41/39
Net Weight (lb):	102	Sound Power Level (dBA):	
Panel Weight (lb):		Ext. Static Pressure (Rated/Max) (inWg):	0.40 / 0.80

**Submittal Data Sheet**  
 3.0-Ton DC Ducted Concealed Ceiling  
 FXMQ36PBVJU

**DIMENSIONAL DRAWING**

FXMQ30,36,48,54PAVJU



LSM - Yanmar Distributor  
 Direct (250) 878-1666  
 Office (800) 663-1753  
 www.lsm-cogeneration.com

Daikin North America LLC, 5151 San Felipe, Suite 500, Houston, TX, 77056

[www.daikinac.com](http://www.daikinac.com) [www.daikincomfort.com](http://www.daikincomfort.com)

Daikin City Generated Submittal Data

(Daikin's products are subject to continuous improvements. Daikin reserves the right to modify product design, specifications and information in this data sheet without notice and without incurring any obligations)