



Submittal Data Sheet

2.0-Ton Slim Duct Built-in Concealed Ceiling Unit

FXDQ24MVJU

FEATURES

- The slim height, at only 7-7/8", makes it suitable for most of the applications where attic / bulkhead space is limited
- With a sound level as low as 32dBA, these systems are among the quietest on the market
- Washable filter included
- Built-in condensate pump
- Blends unobtrusively with any interior decor; only the suction and discharge grills are visible
- Standard Limited Warranty: 10-year warranty on compressor and all parts



LSM - Yanmar Distributor

Direct (250) 878-1666
Office (800) 663-1753

www.lsm-cogeneration.com



Submittal Data Sheet

2.0-Ton Slim Duct Built-in Concealed Ceiling Unit

FXDQ24MVJU

PERFORMANCE

Indoor Unit Model No.	FXDQ24MVJU	Indoor Unit Name:	2.0-Ton Slim Duct Built-in Concealed Ceiling Unit
Type:	Ducted	Rated Cooling Conditions:	Indoor (°F DB/WB): 80 / 67 Ambient (°F DB/WB): 95 / 75
Rated Cooling Capacity (Btu/hr):	24,000	Rated Heating Conditions:	Indoor (°F DB/WB): 70 / 70 Ambient (°F DB/WB): 47 / 43
Sensible Capacity (Btu/hr):	16,400	Rated Piping Length(ft):	
Cooling Input Power (kW):	0.190	Rated Height Separation (ft):	
Rated Heating Capacity (Btu/hr):	27,000		
Heating Input Power (kW):	0.18		

INDOOR UNIT DETAILS

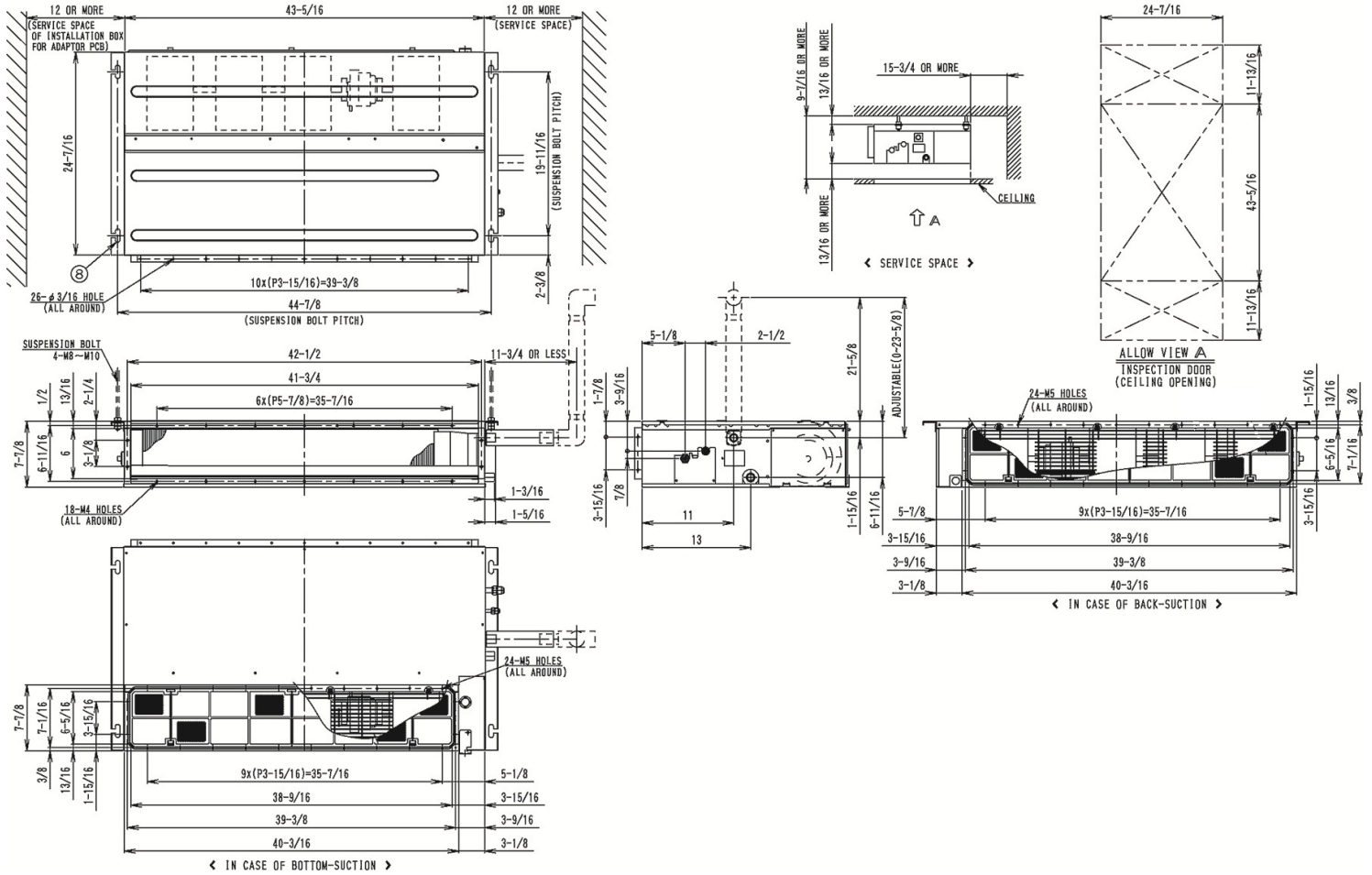
Power Supply (V/Hz/Ph):	208-230 / 60 / 1	Airflow Rate (H/L) (CFM):	580/460
Power Supply Connections:	L1, L2, Ground	Moisture Removal (Gal/hr):	
Min. Circuit Amps MCA (A):	1.40	Gas Pipe Connection (inch):	5/8
Max Overcurrent Protection (MOP) (A):		Liquid Pipe Connection (inch):	3/8
Dimensions (HxWxD) (in):	7-7/8 x 43-5/16 x 24-7/16	Condensate Connection (inch):	1-1/32
Panel (HxWxD) (in):		Sound Pressure (H/L) (dBA):	36/32
Net Weight (lb):	71	Sound Power Level (dBA):	53
Panel Weight (lb):		Ext. Static Pressure (Rated/Max) (inWg):	0.17 / 0.17

Submittal Data Sheet

2.0-Ton Slim Duct Built-in Concealed Ceiling Unit
FXDQ24MVJU

DIMENSIONAL DRAWING

FXDQ24MVJU
Unit (in.)



LSM - Yanmar Distributor

Direct (250) 878-1666
Office (800) 663-1753

www.lsm-cogeneration.com