



## Submittal Data Sheet

1.5-Ton Round Flow Sensing Cassette

FXFQ18TVJU

### FEATURES

- True 360° airflow distribution and three room sensors enables optimized occupant comfort and efficiency
- Optional self-cleaning filter panel to further increase efficiency and reduce maintenance costs
- Individually controlled supply air louvers for comfortable air supply
- Improved efficiency with new DC fan motor and auto logic that adjusts fan speed based on space load
- Industry leading flexibility with 23 possible airflow patterns
- Standard Limited Warranty: 10-year warranty on compressor and all parts

### BENEFITS

- Compact design to allow for installation in small ceiling voids
- Very low sound levels increases flexibility regarding location of the unit
- Increased indoor air quality with high efficiency filter options & ventilation connection kit
- Automatic occupancy dependant Set back function to save energy



LSM - Yanmar Distributor

Direct (250) 878-1666  
Office (800) 663-1753

[www.lsm-cogeneration.com](http://www.lsm-cogeneration.com)



## Submittal Data Sheet

1.5-Ton Round Flow Sensing Cassette

FXFQ18TVJU

### PERFORMANCE

|                                  |                  |                               |   |
|----------------------------------|------------------|-------------------------------|---|
| Indoor Unit Model No.            | FXFQ18TVJU       | Indoor Unit Name:             | 1.5-Ton Round Flow Sensing Cassette                       |
| Type:                            | Ceiling Cassette | Rated Cooling Conditions:     | Indoor (°F DB/WB): 80 / 67<br>Ambient (°F DB/WB): 95 / 75 |
| Rated Cooling Capacity (Btu/hr): | 18,000           | Rated Heating Conditions:     | Indoor (°F DB/WB): 70 / 70<br>Ambient (°F DB/WB): 47 / 43 |
| Sensible Capacity (Btu/hr):      | 16,000           | Rated Piping Length(ft):      |   |
| Cooling Input Power (kW):        | 0.080            | Rated Height Separation (ft): |   |
| Rated Heating Capacity (Btu/hr): | 20,000           |                               |   |
| Heating Input Power (kW):        | 0.07             |                               |   |

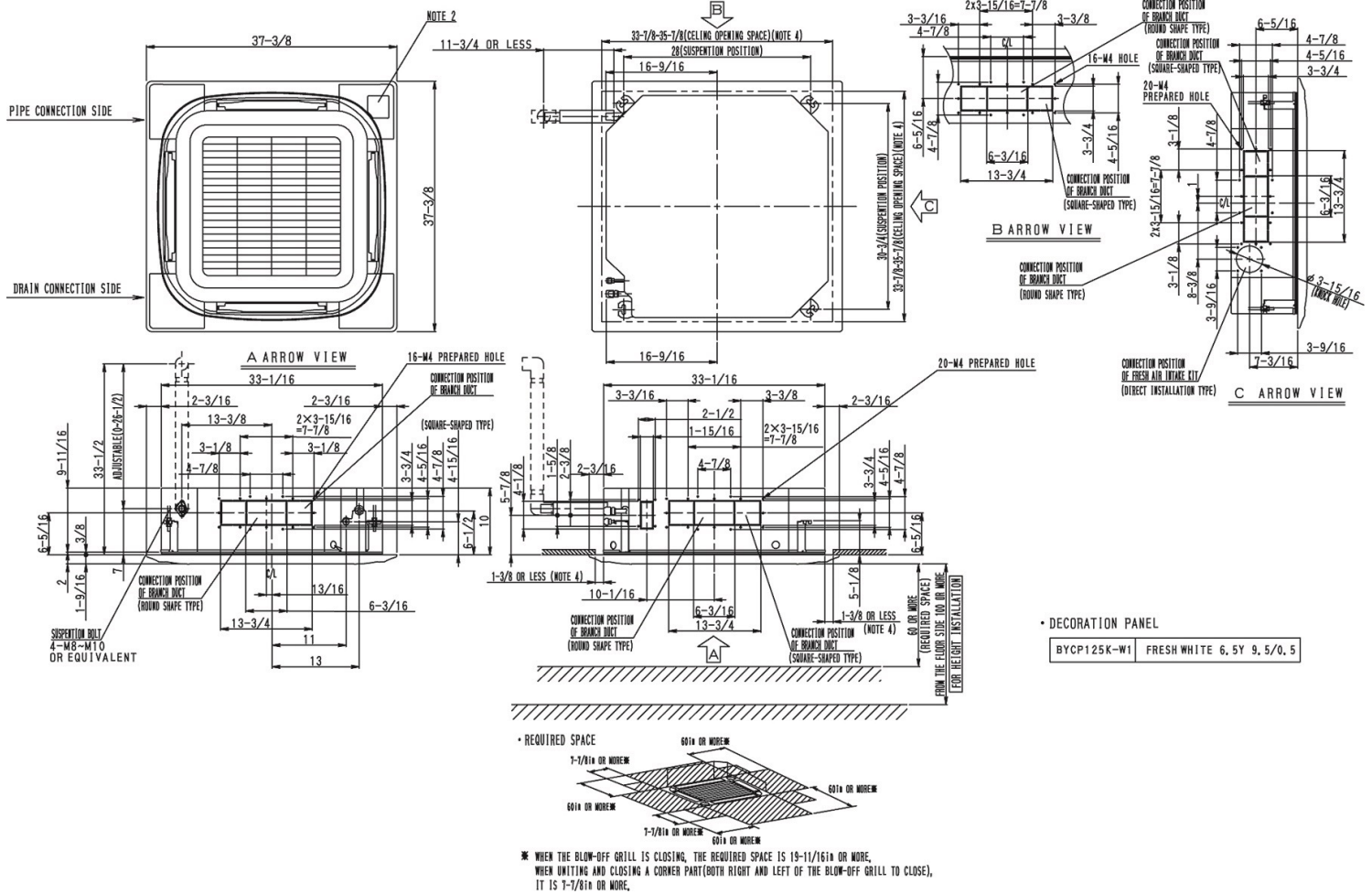
### INDOOR UNIT DETAILS

|                                       |                             |  |             |
|---------------------------------------|-----------------------------|--|-------------|
| Power Supply (V/Hz/Ph):               | 208-230 / 60 / 1            | Airflow Rate (H/M/L) (CFM):              | 740/618/477 |
| Power Supply Connections:             | L1, L2, Ground              | Moisture Removal (Gal/hr):               |             |
| Min. Circuit Amps MCA (A):            | 0.60                        | Gas Pipe Connection (inch):              | 1/2         |
| Max Overcurrent Protection (MOP) (A): |                             | Liquid Pipe Connection (inch):           | 1/4         |
| Dimensions (HxWxD) (in):              | 9-11/16 x 33-1/16 x 33-1/16 | Condensate Connection (inch):            | 1-1/4       |
| Panel (HxWxD) (in):                   | 2 x 37-3/8 x 37-3/8         | Sound Pressure (H/L) (dBA):              | 32/27       |
| Net Weight (lb):                      | 51                          | Sound Power Level (dBA):                 |             |
| Panel Weight (lb):                    | 22                          | Ext. Static Pressure (Rated/Max) (inWg): | 0.00 / 0.00 |

**Submittal Data Sheet**  
 1.5-Ton Round Flow Sensing Cassette  
 FXFQ18TVJU

**DIMENSIONAL DRAWING**

**FXFQ07-24TVJU**  
 Unit (inches)



LSM - Yanmar Distributor

Direct (250) 878-1666  
 Office (800) 663-1753

www.lsm-cogeneration.com