



Submittal Data Sheet

0.75-Ton Slim Duct Built-in Concealed Ceiling Unit

FXDQ09MVJU

FEATURES

- The slim height, at only 7-7/8", makes it suitable for most of the applications where attic / bulkhead space is limited
- With a sound level as low as 29dBA, these systems are among the quietest on the market
- Washable filter included
- Built-in condensate pump
- Blends unobtrusively with any interior decor; only the suction and discharge grills are visible
- Standard Limited Warranty: 10-year warranty on compressor and all parts



LSM - Yanmar Distributor

Direct (250) 878-1666
Office (800) 663-1753

www.lsm-cogeneration.com



Submittal Data Sheet

0.75-Ton Slim Duct Built-in Concealed Ceiling Unit

FXDQ09MVJU

PERFORMANCE

Indoor Unit Model No.	FXDQ09MVJU	Indoor Unit Name:	0.75-Ton Slim Duct Built-in Concealed Ceiling Unit
Type:	Ducted	Rated Cooling Conditions:	Indoor (°F DB/WB): 80 / 67 Ambient (°F DB/WB): 95 / 75
Rated Cooling Capacity (Btu/hr):	9,500	Rated Heating Conditions:	Indoor (°F DB/WB): 70 / 70 Ambient (°F DB/WB): 47 / 43
Sensible Capacity (Btu/hr):	7,300	Rated Piping Length(ft):	
Cooling Input Power (kW):	0.090	Rated Height Separation (ft):	
Rated Heating Capacity (Btu/hr):	10,500		
Heating Input Power (kW):	0.07		

INDOOR UNIT DETAILS

Power Supply (V/Hz/Ph):	208-230 / 60 / 1	Airflow Rate (H/L) (CFM):	280/226
Power Supply Connections:	L1, L2, Ground	Moisture Removal (Gal/hr):	
Min. Circuit Amps MCA (A):	0.90	Gas Pipe Connection (inch):	1/2
Max Overcurrent Protection (MOP) (A):		Liquid Pipe Connection (inch):	1/4
Dimensions (HxWxD) (in):	7-7/8 x 27-9/16 x 24-7/16	Condensate Connection (inch):	1-1/32
Panel (HxWxD) (in):		Sound Pressure (H/L) (dBA):	33/29
Net Weight (lb):	51	Sound Power Level (dBA):	51
Panel Weight (lb):		Ext. Static Pressure (Rated/Max) (inWg):	0.12 / 0.12

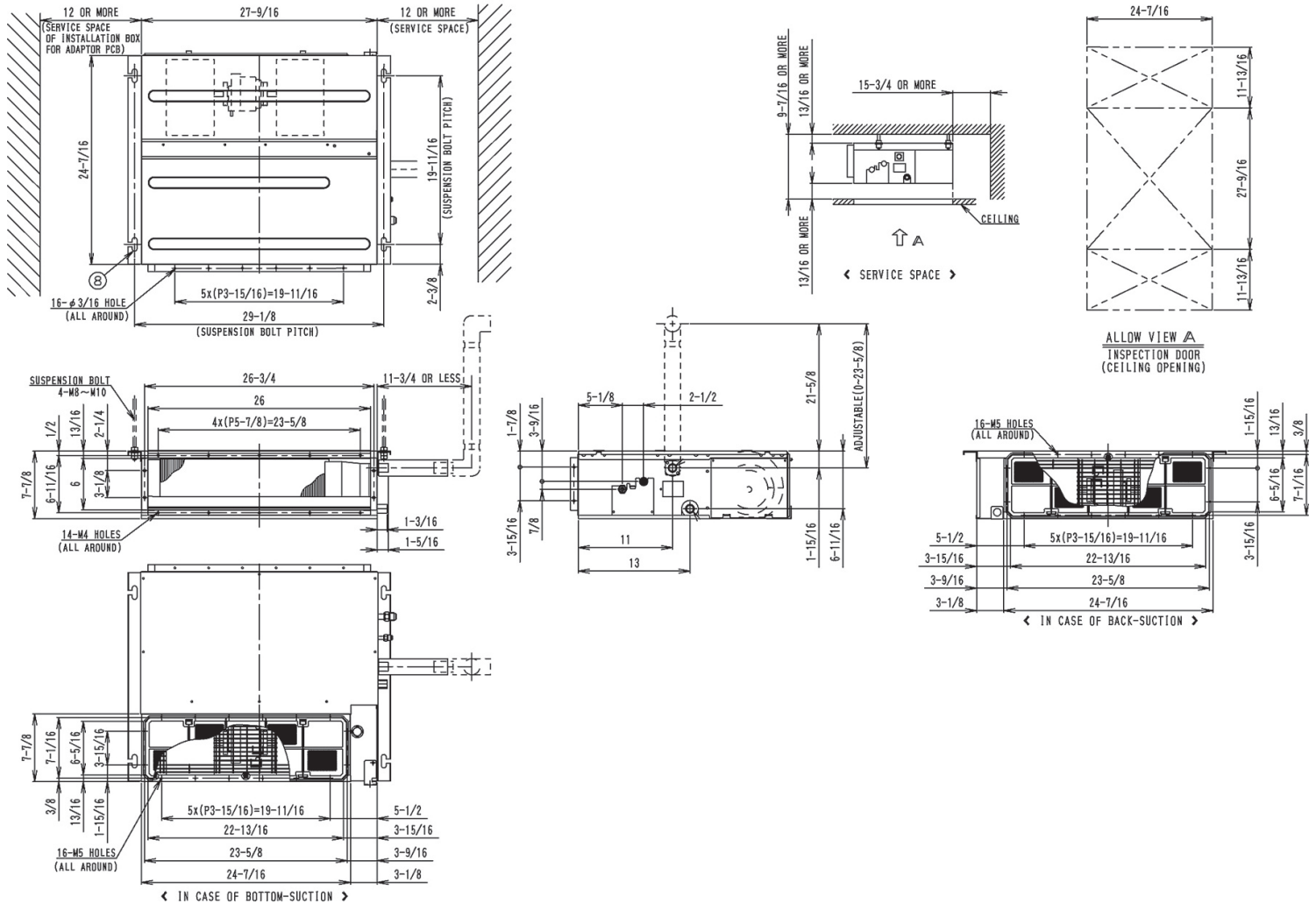
Submittal Data Sheet

0.75-Ton Slim Duct Built-in Concealed Ceiling Unit

FXDQ09MVJU

DIMENSIONAL DRAWING

FXD07/09/12MVJU
Unit (in.)



LSM - Yanmar Distributor

Direct (250) 878-1666
Office (800) 663-1753

www.lsm-cogeneration.com