



## Submittal Data Sheet

0.6-Ton DC Ducted Concealed Ceiling

FXMQ07PBVJU

### FEATURES

- Standard Limited Warranty: 10-year warranty on compressor and all parts
- Installation flexibility with a low profile, compact design at less than 12" in height
- Easy maintenance with service access from below
- Ease of installation with auto adjusting airflow at commissioning based on external static pressure
- Improved efficiency with DC fan motor
- Increased capacity range for increased flexibility

### BENEFITS

- Design allows it to be completely concealed - perfect for retail, classrooms, offices, banks, restaurants, and hotels.
- New configurable auxiliary heater control logic
- New economizer control logic
- Flexible ductwork design with ESP capabilities up to 0.54" W.G.
- Enhanced indoor air quality and LEED ready with MERV 13 filter options





## Submittal Data Sheet

0.6-Ton DC Ducted Concealed Ceiling

FXMQ07PBVJU

### PERFORMANCE

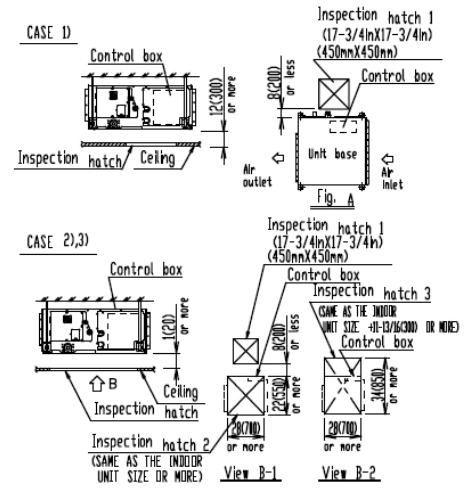
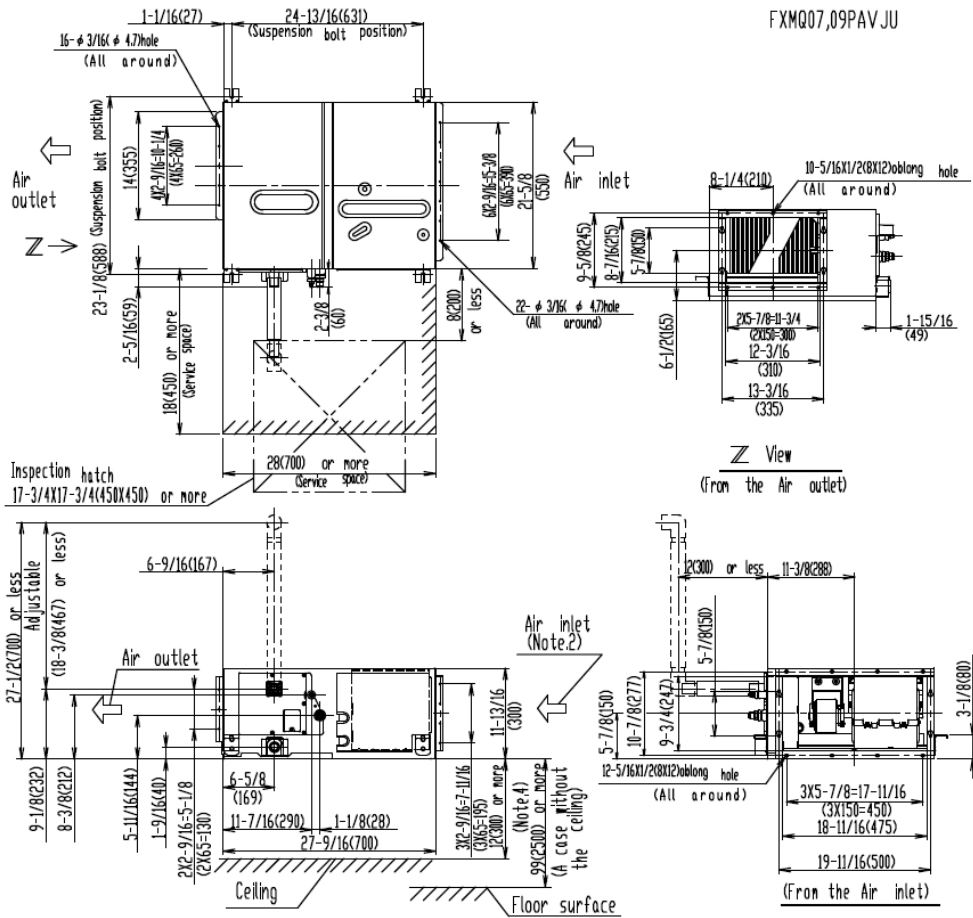
Indoor Unit Model No.	FXMQ07PBVJU	Indoor Unit Name:	0.6-Ton DC Ducted Concealed Ceiling
Type:	Ducted	Rated Cooling Conditions:	Indoor (°F DB/WB): 80 / 67 Ambient (°F DB/WB): 95 / 75
Rated Cooling Capacity (Btu/hr):	7,500	Rated Heating Conditions:	Indoor (°F DB/WB): 70 / 70 Ambient (°F DB/WB): 47 / 43
Sensible Capacity (Btu/hr):	6,400	Rated Piping Length(ft):	
Cooling Input Power (kW):	0.080	Rated Height Separation (ft):	
Rated Heating Capacity (Btu/hr):	8,500		
Heating Input Power (kW):	0.07		

### INDOOR UNIT DETAILS

Power Supply (V/Hz/Ph):	208-230 / 60 / 1	Airflow Rate (HH/H/M/L) (CFM):	317/317/264/229
Power Supply Connections:	L1, L2, Ground	Moisture Removal (Gal/hr):	
Min. Circuit Amps MCA (A):	0.60	Gas Pipe Connection (inch):	1/2
Max Overcurrent Protection (MOP) (A):	15.00	Liquid Pipe Connection (inch):	1/4
Dimensions (HxWxD) (in):	11-13/16 x 21-5/8 x 27-9/16	Condensate Connection (inch):	1-1/4
Panel (HxWxD) (in):		Sound Pressure (H/M/L) (dBA):	33/31/29
Net Weight (lb):	55	Sound Power Level (dBA):	
Panel Weight (lb):		Ext. Static Pressure (Rated/Max) (inWg):	0.20 / 0.40

**Submittal Data Sheet**  
 0.6-Ton DC Ducted Concealed Ceiling  
 FXMQ07PBVJU

**DIMENSIONAL DRAWING**



LSM - Yanmar Distributor

Direct (250) 878-1666  
 Office (800) 663-1753

[www.lsm-cogeneration.com](http://www.lsm-cogeneration.com)

Daikin North America LLC, 5151 San Felipe, Suite 500, Houston, TX, 77056

[www.daikinac.com](http://www.daikinac.com) [www.daikincomfort.com](http://www.daikincomfort.com)

(Daikin's products are subject to continuous improvements. Daikin reserves the right to modify product design, specifications and information in this data sheet without notice and without incurring any obligations)