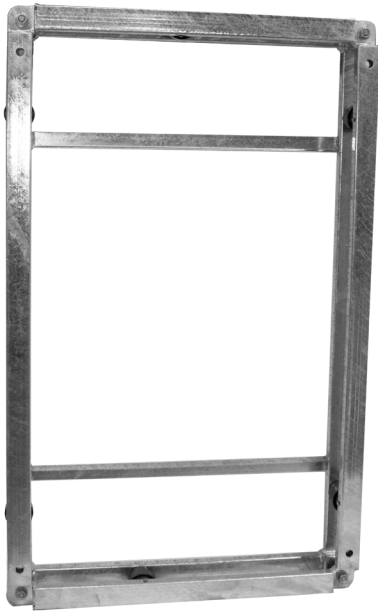


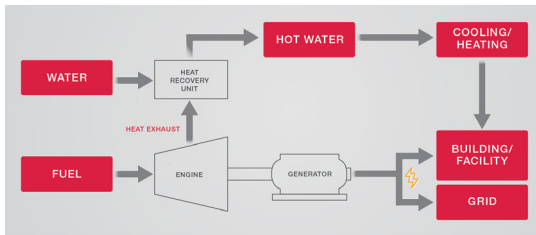


BKC10B1 ANTI- VIBRATION MOUNT



The Anti-Vibration mount is used to prevent vibration from the CHP from reaching the building, and to reduce the noise level cause by vibration. Installation is necessary when the unit is installed on a roof, indoors in an area with rooms/floors underneath or in certain basements.

CHP Basic Flow



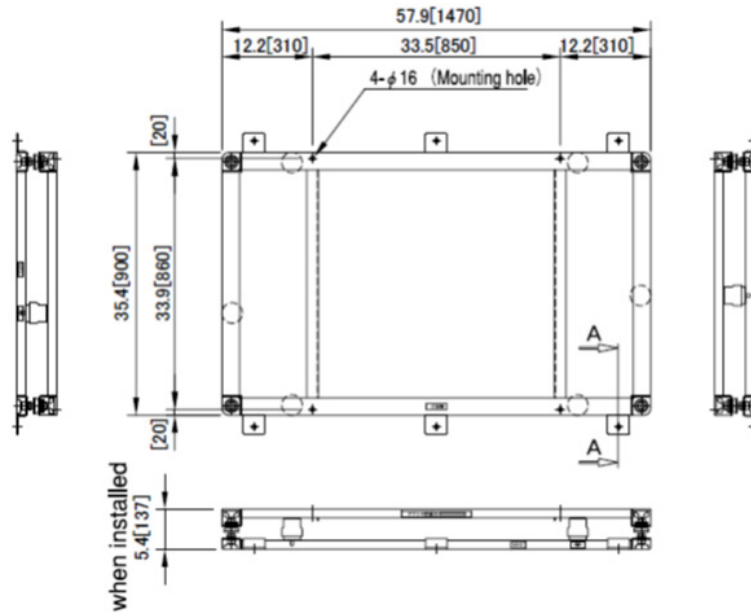
Model	BKC10B1
Model Description	Anti-Vibration Mount
Applicable CP Models	CP10WN
Dimensions	57.9 x 35.4 x 5.4 inches (1,470 x 570 x 136 mm)
Weight	78.3 lb (35.5 kg) Mount: 39.2 lb (17.8 kg)
Surface Treatment	Hot Dip Galvanizing
Mount	STKR: 2.4 x 1.2 x .1 inches (60 x 30 x 2.3 mm) Angle Steel: 1.6 x .6 x .1 inches (40 x 40 x 3 mm)
Base	STKR: 2.4 x 2.4 x .1 inches (60 x 60 x 2.3 mm)
Isolator	Coil Spring 6 Pieces: CMU77-108 (108 n/mm)
Stabilizer/ Earthquake-proof Stoppers	4 Sets, Hot Dip Galvanizing Design Seismic Coefficient: Horizontal 2.0 Vertical 1.0
Others	Part Number Label Front Label
Accessories	Hexagon Mounting Bolts: M12×70L (2N, W, KW)
	Square Washers for Foundation Bolts (for M12) 4 Sets Each, Hot Dip Galvanizing
	Foundation Bolt Brackets for Outdoor Installation: GB-AB1 1 Set (6 Pieces), Hot Dip Galvanizing
	Instruction Manual
Standard Warranty	2 Years/Unlimited Hours
Maintenance & Extended Warranty Plans (Optional YES Product Protection Available as part of a complete mCHP system.)	10 Years/30,000 Hours; <i>Whichever Comes First</i>
	10 Years/60,000 Hours; <i>Whichever Comes First</i>
	15 Years/90,000 Hours; <i>Whichever Comes First</i>

NOTE: Due to YANMAR's ongoing commitment to quality, specifications, ratings and dimensions subject to change without notice. Improper installation, adjustment, alteration, service or maintenance can cause property damage or personal injury. Installation and service must be in accordance with current specifications, ratings and dimensions and be performed by a qualified installer and servicing agency.

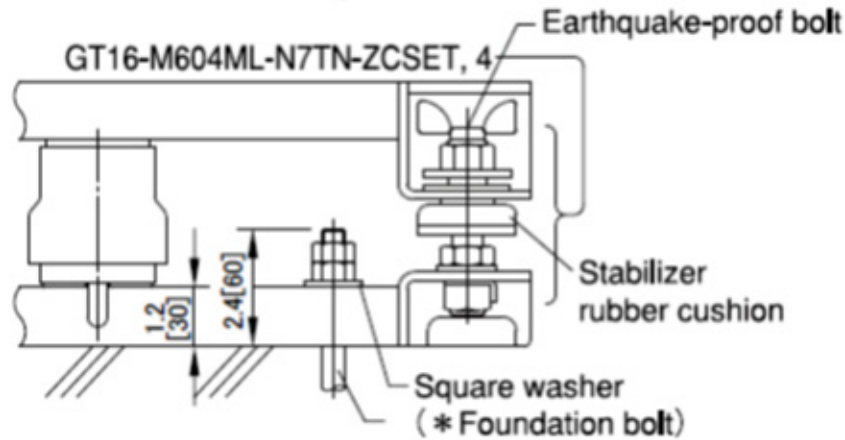


BKC10B1 ANTI- VIBRATION MOUNT

Dimensional Drawings:
Units: Inches [mm]



Detailed View of Earthquake-Proof Section



LSM - Yanmar Distributor

Direct (250) 878-1666
Office (800) 663-1753

www.lsm-cogeneration.com

NOTE: Due to YANMAR's ongoing commitment to quality, specifications, ratings and dimensions subject to change without notice. Improper installation, adjustment, alteration, service or maintenance can cause property damage or personal injury. Installation and service must be in accordance with current specifications, ratings and dimensions and be performed by a qualified installer and servicing agency.

YANMAR ENERGY SYSTEMS 2015
yanmar-es.com
E15YMASPC04