



## Submittal Data Sheet

1.5-Ton Wall Mounted Unit

FXAQ18PVJU

### FEATURES

- Auto-swing mechanism ensures efficient air distribution via louvers that automatically close when the unit is turned off
- Easy to clean front panel with a flat smooth surface that can be removed for additional cleaning
- Five different airflow distribution angles programmable by the optional controller
- Condensate drain pipe can be installed on either the left or right side of the unit
- Wide air discharge outlet distributes a comfortable airflow throughout the entire space
- Standard Limited Warranty: 10-year warranty on compressor and all parts



LSM - Yanmar Distributor

Direct (250) 878-1666  
Office (800) 663-1753

[www.lsm-cogeneration.com](http://www.lsm-cogeneration.com)



## Submittal Data Sheet

1.5-Ton Wall Mounted Unit

FXAQ18PVJU

### PERFORMANCE

Indoor Unit Model No.	FXAQ18PVJU	Indoor Unit Name:	1.5-Ton Wall Mounted Unit
Type:	Wall Mounted	Rated Cooling Conditions:	Indoor (°F DB/WB): 80 / 67 Ambient (°F DB/WB): 95 / 75
Rated Cooling Capacity (Btu/hr):	18,000	Rated Heating Conditions:	Indoor (°F DB/WB): 70 / 70 Ambient (°F DB/WB): 47 / 43
Sensible Capacity (Btu/hr):	13,700	Rated Piping Length(ft):	
Cooling Input Power (kW):	0.030	Rated Height Separation (ft):	
Rated Heating Capacity (Btu/hr):	20,000		
Heating Input Power (kW):	0.04		

### INDOOR UNIT DETAILS

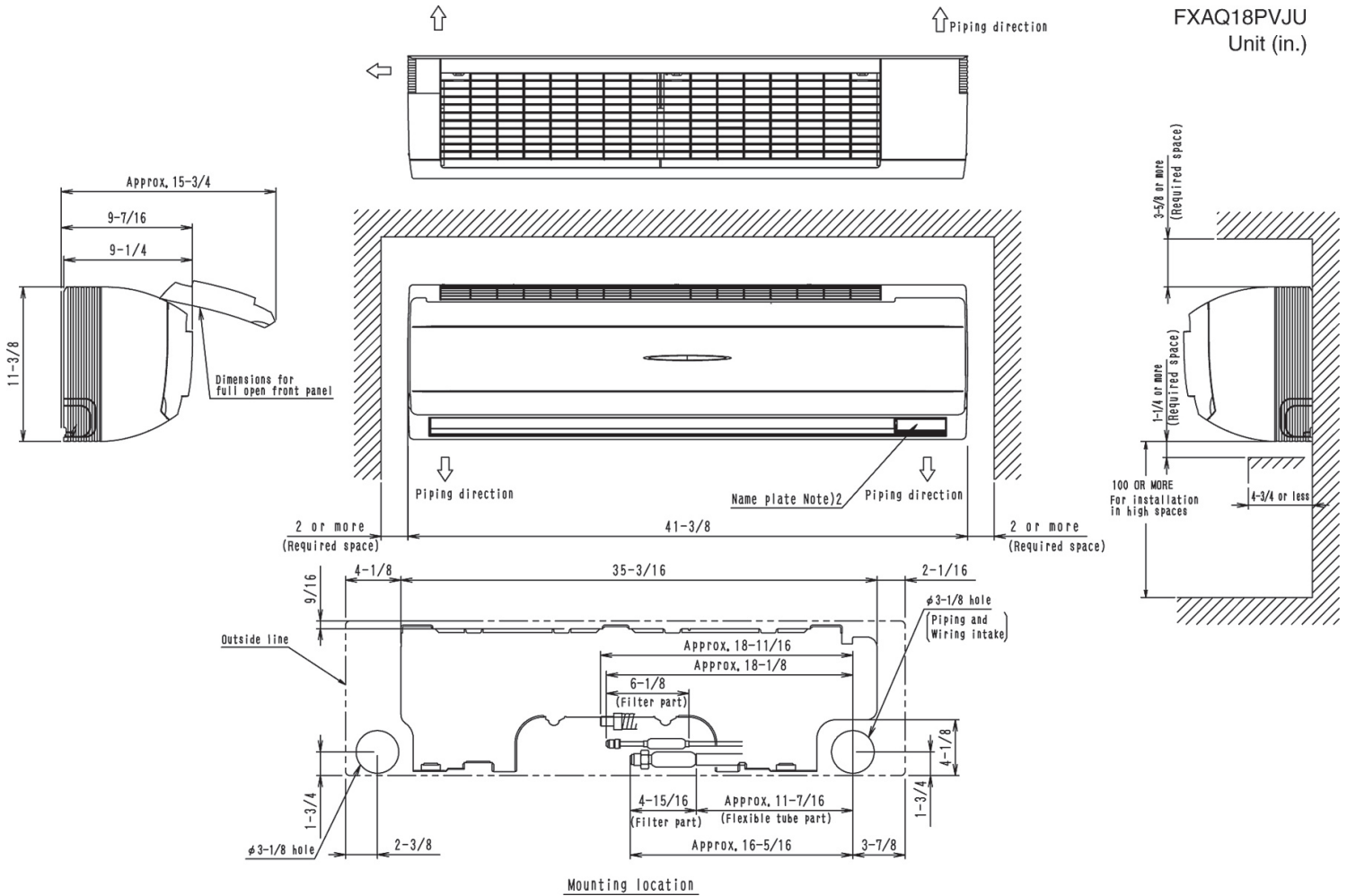
Power Supply (V/Hz/Ph):	208-230 / 60 / 1	Airflow Rate (H/L) (CFM):	500/400
Power Supply Connections:	L1, L2, Ground	Moisture Removal (Gal/hr):	
Min. Circuit Amps MCA (A):	0.50	Gas Pipe Connection (inch):	1/2
Max Overcurrent Protection (MOP) (A):		Liquid Pipe Connection (inch):	1/4
Dimensions (HxWxD) (in):	11-3/8 x 41-3/8 x 9-1/4	Condensate Connection (inch):	11/16
Panel (HxWxD) (in):		Sound Pressure (H/L) (dBA):	43/37
Net Weight (lb):	31	Sound Power Level (dBA):	
Panel Weight (lb):		Ext. Static Pressure (Rated/Max) (inWg):	0.00 / 0.00

## Submittal Data Sheet

1.5-Ton Wall Mounted Unit

FXAQ18PVJU

## DIMENSIONAL DRAWING



LSM - Yanmar Distributor

Direct (250) 878-1666  
Office (800) 663-1753

[www.lsm-cogeneration.com](http://www.lsm-cogeneration.com)